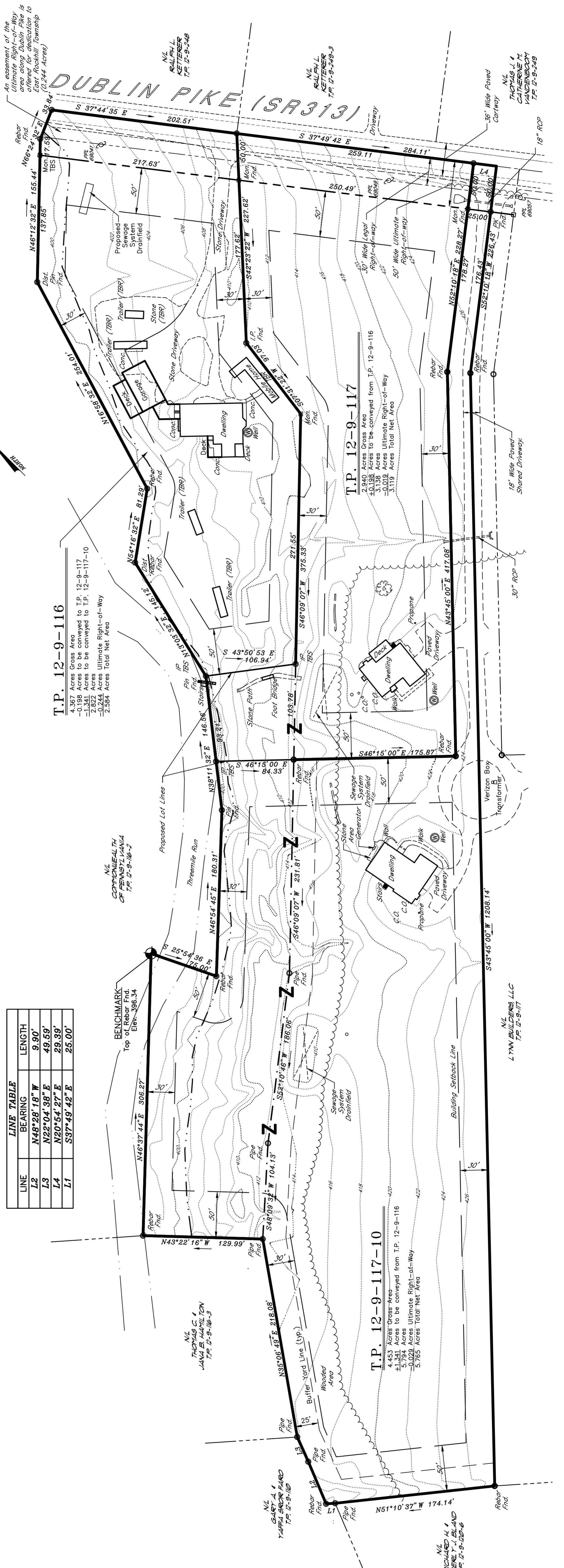
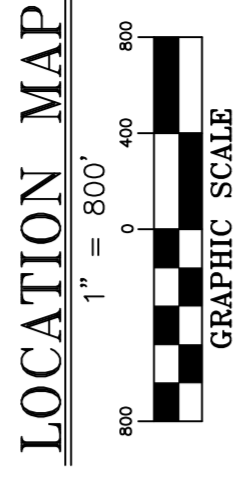
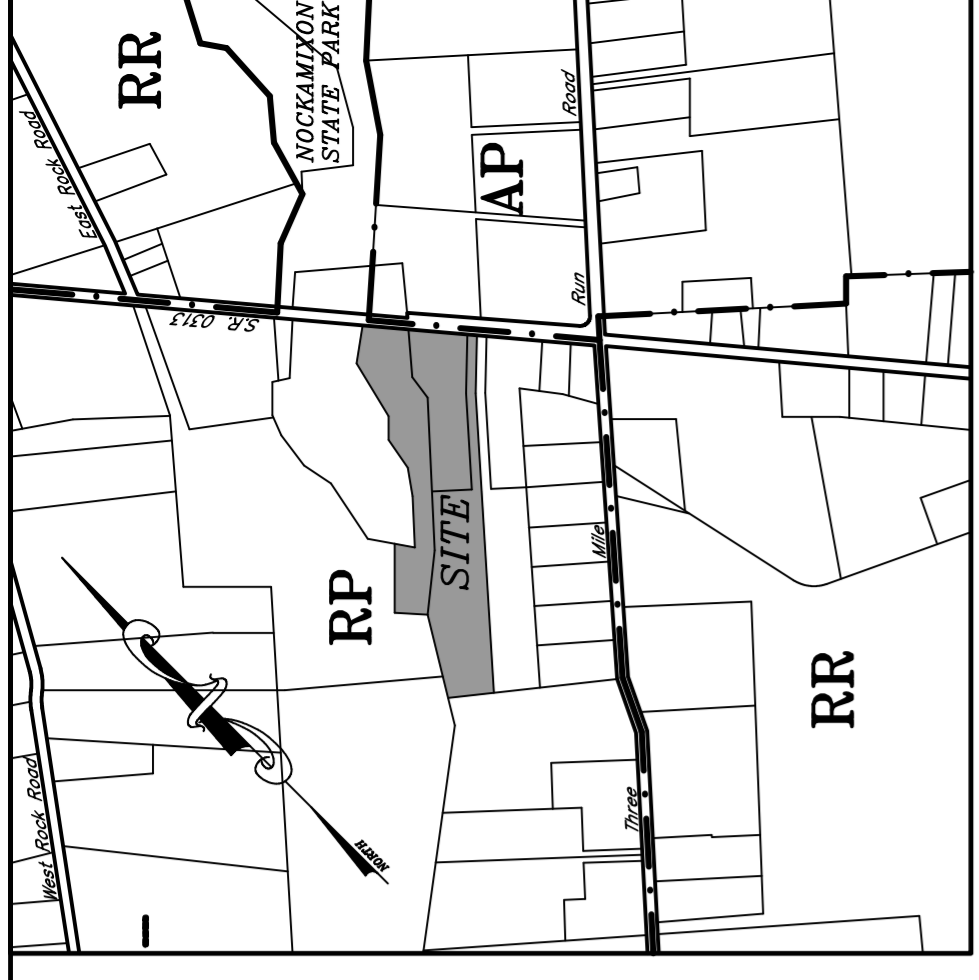


SYMBOLS

- Property Corner Marker
- Concrete Monument Corner Marker
- ⊕ Utility Pole
- Adjoining Property Line (Approx.)
- Building Setback Line
- Buffer Yard Line
- Existing Contour
- RP** - Zoning District
- Zoning District Boundary Line
- Floodplain Line (see Note 2)
- Property Line To Be Deleted
- Well
- Existing Tree Line
- Stippled Text* - Existing Features
- Straight Text - Proposed Features
- TBR - To Be Removed

LINE	BEARING	LENGTH
L2	N48°28'18" W	9.90'
L3	N22°04'38" E	49.59'
L4	N20°54'27" E	29.39'
L1	S37°49'42" E	25.00'



T.P. 12-9-116
 4.367 Acres Gross Area
 0.136 Acres to be conveyed to T.P. 12-9-117
 0.134 Acres to be conveyed to T.P. 12-9-117-10
 2.822 Acres
 0.003 Acres Ultimate Right-of-Way
 0.244 Acres Ultimate Right-of-Way
 2.564 Acres Total Net Area

T.P. 12-9-117
 2.840 Acres Gross Area
 0.198 Acres to be conveyed from T.P. 12-9-116
 3.138 Acres Ultimate Right-of-Way
 0.003 Acres Total Net Area
 3.119 Acres Total Net Area

T.P. 12-9-117-10
 4.453 Acres Gross Area
 1.341 Acres to be conveyed from T.P. 12-9-116
 5.794 Acres Ultimate Right-of-Way
 0.023 Acres Ultimate Right-of-Way
 5.765 Acres Total Net Area

N/L
 COMMONWEALTH
 OF PENNSYLVANIA
 T.P. 12-9-116-2

N/L
 THOMAS C.
 JANA B. HAMILTON
 T.P. 12-9-116-3

N/L
 GARY A.
 YAFFA GROR FARD
 T.P. 12-9-116-4

N/L
 MICHAEL H.
 JEFFY J. BLAND
 T.P. 12-9-116-6

N/L
 L YAN BUILDERS, LLC
 T.P. 12-9-117

N/L
 RALPH L.
 KETTERER
 T.P. 12-9-116-3

N/L
 RALPH L.
 KETTERER
 T.P. 12-9-116-3

N/L
 THOMAS J.
 CATHERINE M.
 VANDENBOY
 T.P. 12-9-116-5

An easement of the
 Ultimate Right-of-Way
 area along Dublin Pike is
 offered for dedication to
 East Rockhill Township
 (0.244 Acres)

DUBLIN PIKE (SR313)