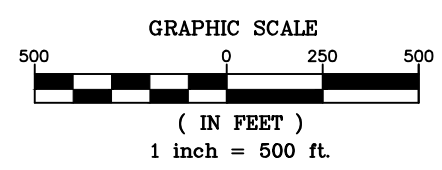


1938

**PLAN NOTATION**  
 ONLY THOSE PLANS WHICH CONTAIN AN IMPRESSED SEAL OR A RED INK SEAL OF THE RESPONSIBLE PROFESSIONAL SHALL BE CONSIDERED VALID. THIS PLAN HAS BEEN SPECIFICALLY PREPARED FOR THE OWNER DESIGNATED HEREON. ANY MODIFICATION, REVISION, DUPLICATION OR USE WITHOUT THE WRITTEN CONSENT OF VAN CLEEF ENGINEERING ASSOCIATES IS PROHIBITED. RELIANCE ON THIS PLAN FOR ANY PURPOSE OTHER THAN THAT WHICH IS INTENDED SHALL BE AT THE SOLE DISCRETION AND LIABILITY OF THE APPLICABLE PARTY.

- LEGEND**
- EXTRACTION DISTRICT (CURRENT)
  - SMP (SURFACE MINING PERMIT) BOUNDARY
  - 200 FT. QUARRY SETBACK
  - MINING AREA
  - MINING SETBACK (1970)



**GENERAL NOTES**  
 1. SOURCE OF 1938 IMAGE SHOWN HEREON TAKEN FROM PASDA WEBSITE ON JANUARY 29, 2019 (<http://www.pasda.psu.edu/>)

REVISIONS	AUTH.	DATE	JOB NO.	DATE

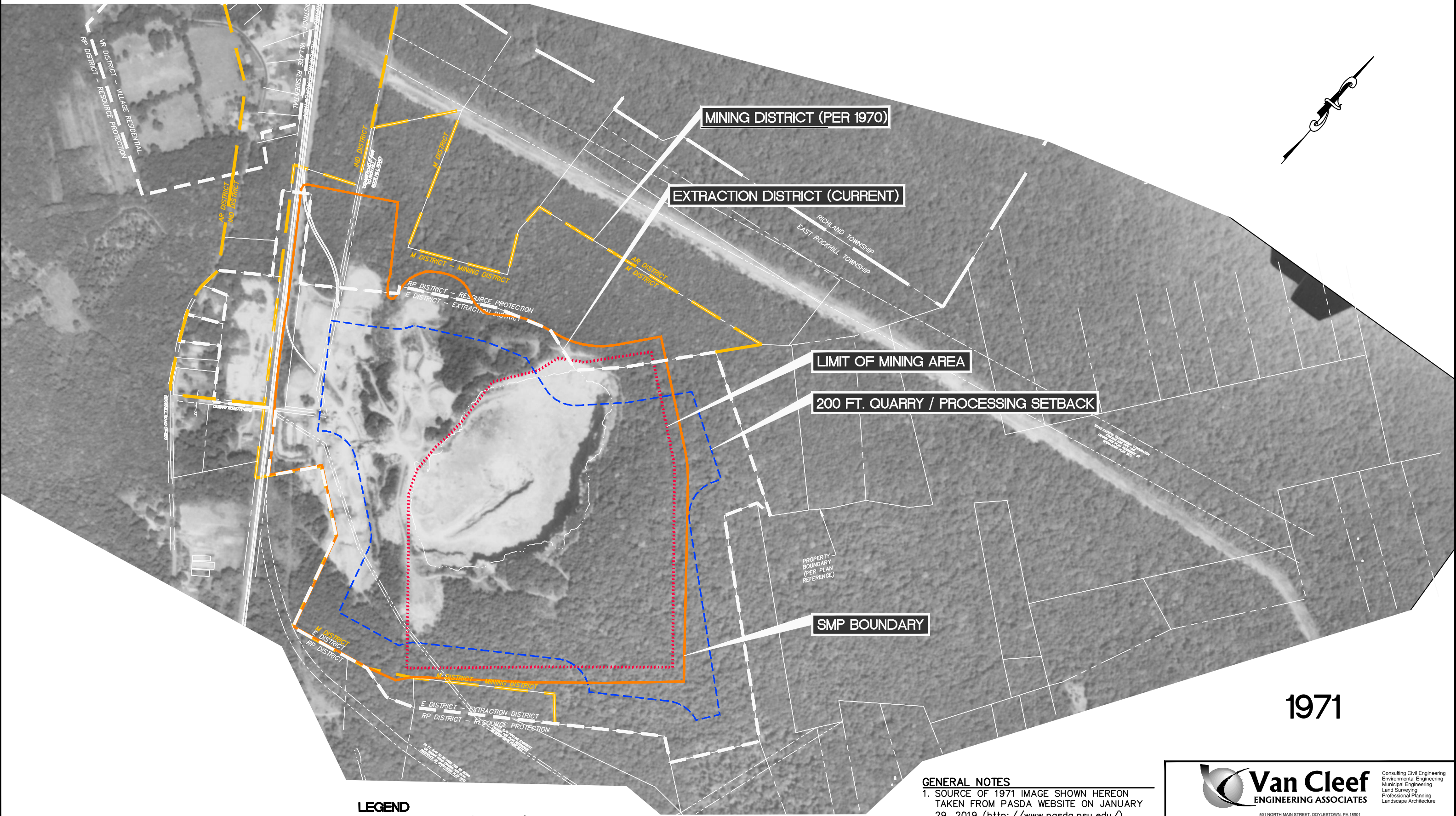
**Van Cleef**  
 ENGINEERING ASSOCIATES

Consulting Civil Engineering  
 Environmental Engineering  
 Municipal Engineering  
 Land Surveying  
 Professional Planning  
 Landscape Architecture

OFFICES THROUGHOUT  
 NJ, EASTERN PA. AND DE

501 NORTH MAIN STREET, DOYLESTOWN, PA 18901  
 EMAIL: [VCEPA@VCEA.ORG](mailto:VCEPA@VCEA.ORG) WEB: [WWW.VCEA.ORG](http://WWW.VCEA.ORG)  
 PHONE: (717) 345-1878 FAX: (717) 345-1730

**1938 AERIAL EXHIBIT**  
 FOR  
**HANSON AGGREGATES PENNSYLVANIA, LLC**  
**TMP# 12-09-102**  
 SITUATED IN  
**EAST ROCKHILL TOWNSHIP, BUCKS COUNTY**  
**COMMONWEALTH OF PENNSYLVANIA**



**MINING DISTRICT (PER 1970)**

**EXTRACTION DISTRICT (CURRENT)**

**LIMIT OF MINING AREA**

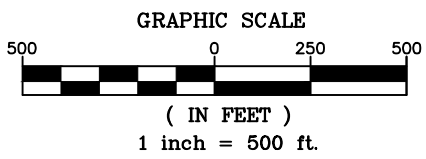
**200 FT. QUARRY / PROCESSING SETBACK**

**SMP BOUNDARY**

**1971**

**PLAN NOTATION**  
 ONLY THOSE PLANS WHICH CONTAIN AN IMPRESSED SEAL OR A RED INK SEAL OF THE RESPONSIBLE PROFESSIONAL SHALL BE CONSIDERED VALID. THIS PLAN HAS BEEN SPECIFICALLY PREPARED FOR THE OWNER DESIGNATED HEREON. ANY MODIFICATION, REVISION, DUPLICATION OR USE WITHOUT THE WRITTEN CONSENT OF VAN CLEEF ENGINEERING ASSOCIATES IS PROHIBITED. RELIANCE ON THIS PLAN FOR ANY PURPOSE OTHER THAN THAT WHICH IS INTENDED SHALL BE AT THE SOLE DISCRETION AND LIABILITY OF THE APPLICABLE PARTY.

- LEGEND**
- EXTRACTION DISTRICT (CURRENT)
  - SMP (SURFACE MINING PERMIT) BOUNDARY
  - 200 FT. QUARRY SETBACK
  - MINING AREA
  - MINING SETBACK (1970)



**GENERAL NOTES**  
 1. SOURCE OF 1971 IMAGE SHOWN HEREON TAKEN FROM PASDA WEBSITE ON JANUARY 29, 2019 (<http://www.pasda.psu.edu/>)

REVISIONS	AUTH.	DATE	JOB NO.	DATE

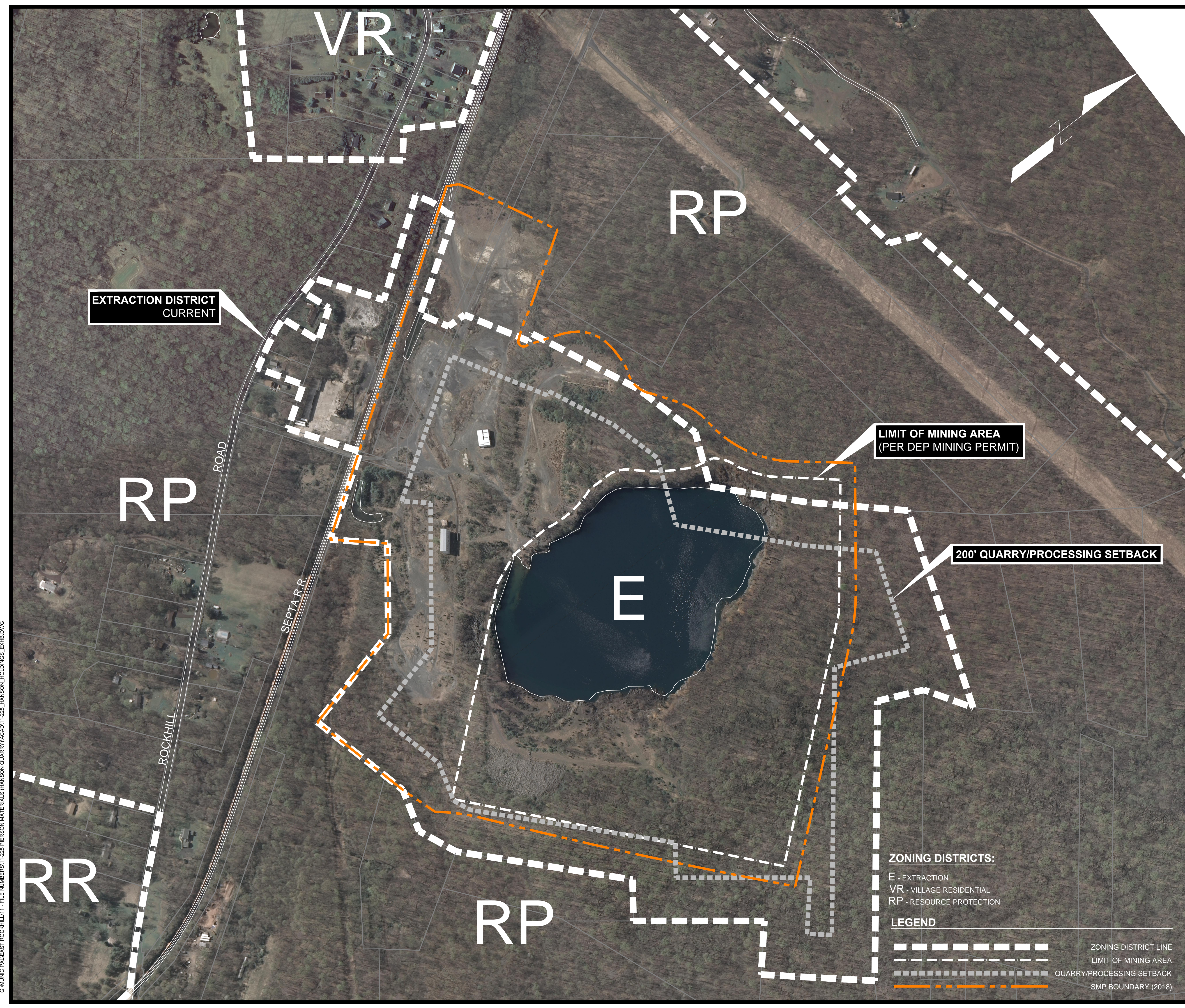
**Van Cleef**  
 ENGINEERING ASSOCIATES

Consulting Civil Engineering  
 Environmental Engineering  
 Municipal Engineering  
 Land Surveying  
 Professional Planning  
 Landscape Architecture

501 NORTH MAIN STREET, DOYLESTOWN, PA 18001  
 EMAIL: [VCEA@VCEA.ORG](mailto:VCEA@VCEA.ORG) WEB: [WWW.VCEA.ORG](http://WWW.VCEA.ORG)  
 PHONE: (717) 345-1879 FAX: (717) 345-1730

**1971 AERIAL EXHIBIT**  
 FOR  
**HANSON AGGREGATES PENNSYLVANIA, LLC**  
 TMP# 12-09-102  
 SITUATED IN  
**EAST ROCKHILL TOWNSHIP, BUCKS COUNTY**  
**COMMONWEALTH OF PENNSYLVANIA**



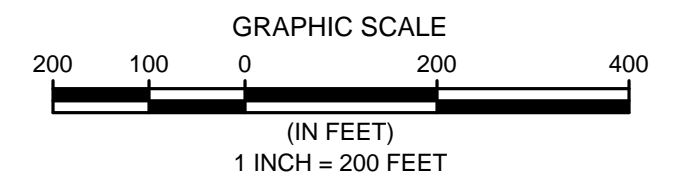


- NOTES:**
1. EXTRACTION DISTRICT BOUNDARY BASED ON 1987 EAST ROCKHILL TOWNSHIP ZONING ORDINANCE MAP.
  2. SURFACE MINING PERMIT (SMP) BOUNDARY BASED ON "FIGURE 1, PERMIT AREA CORRECTION" PLAN, DATED JULY 18, 2018, PREPARED BY EARTHRES, FOR HANSEN AGGREGATES PENNSYLVANIA, LLC.
  3. 2010 DELAWARE VALLEY REGIONAL PLANNING COMMISSION (DVRPC) AERIAL IMAGERY OBTAINED VIA PENNSYLVANIA SPATIAL DATA ACCESS (PASDA) WEBSITE.
  4. QUARRY /PROCESSING SETBACK PURSUANT TO 1987 EAST ROCKHILL TOWNSHIP ZONING ORDINANCE SECTION 27-304.H12.b(2)(b).

EXTRACTION DISTRICT CURRENT

LIMIT OF MINING AREA (PER DEP MINING PERMIT)

200' QUARRY/PROCESSING SETBACK



**ZONING DISTRICTS:**

- E - EXTRACTION
- VR - VILLAGE RESIDENTIAL
- RP - RESOURCE PROTECTION

**LEGEND**

- ZONING DISTRICT LINE
- LIMIT OF MINING AREA
- QUARRY/PROCESSING SETBACK
- SMP BOUNDARY (2018)

NO.	DATE	REV	REVISIONS

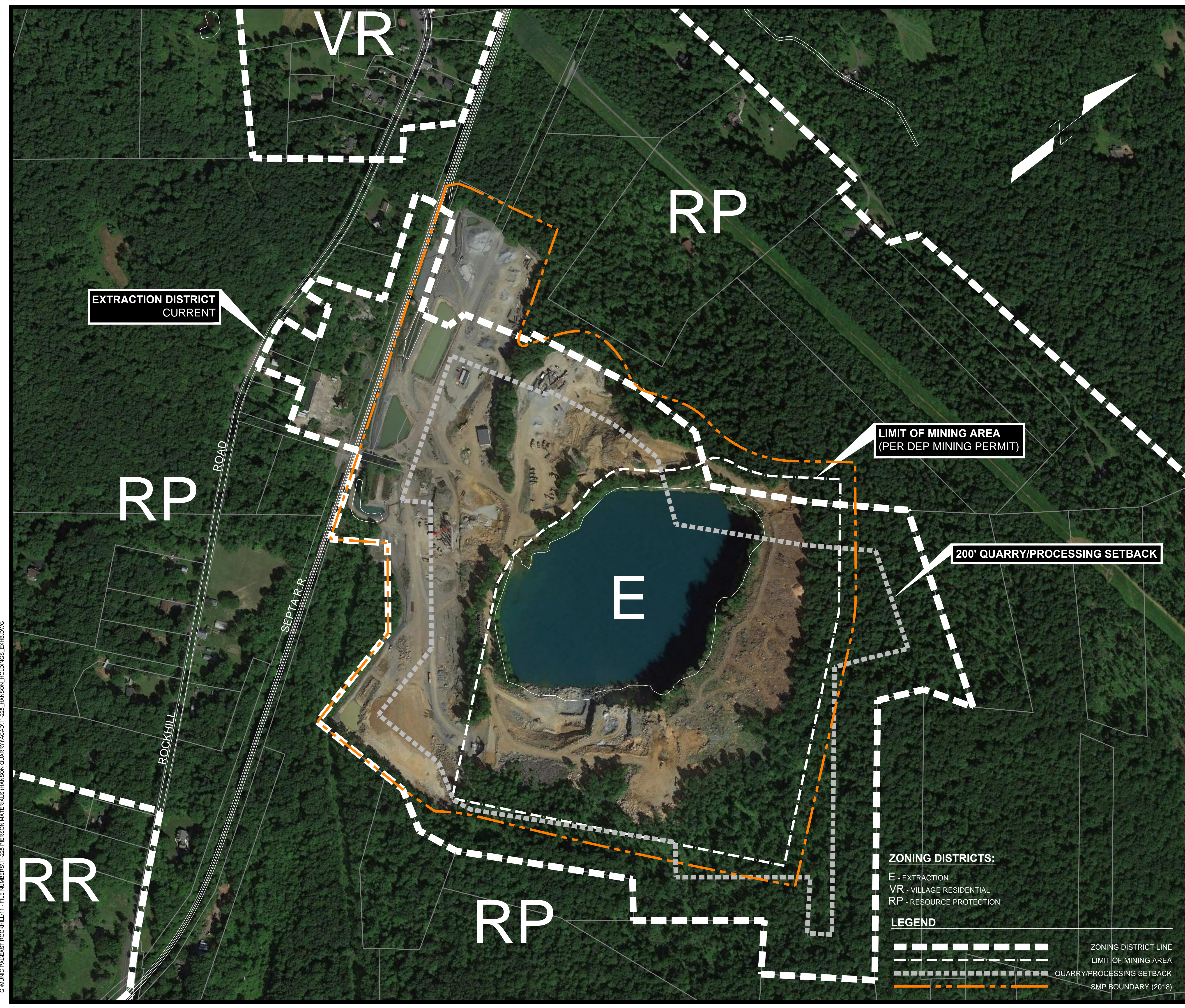
**2010 SITE AERIAL**

**ROCKHILL QUARRY**

EAST ROCKHILL TOWNSHIP, BUCKS COUNTY, PENNSYLVANIA

**C. ROBERT WYNN ASSOCIATES, INC.**  
 MUNICIPAL & CIVIL ENGINEERING  
 211 W. Broad Street, Quakertown, PA 18951 Phone 215-536-7336 Fax 215-536-5361

G:\MUNICIPAL\EAST ROCKHILL\1 - FILE NUMBERS\1-225 PIERSON MATERIALS (HANSON QUARRY)\ACAD\11-225\_HANSON\_HOLDINGS\_EXHB.DWG

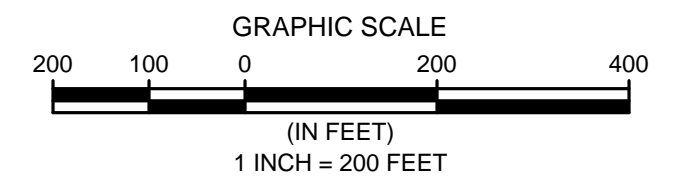


- NOTES:**
1. EXTRACTION DISTRICT BOUNDARY BASED ON 1987 EAST ROCKHILL TOWNSHIP ZONING ORDINANCE MAP.
  2. SURFACE MINING PERMIT (SMP) BOUNDARY BASED ON "FIGURE 1, PERMIT AREA CORRECTION" PLAN, DATED JULY 18, 2018, PREPARED BY EARTHRES, FOR HANSEN AGGREGATES PENNSYLVANIA, LLC.
  3. AERIAL IMAGE ©2018 GOOGLE. AERIAL IMAGE IS NOT ORTHORECTIFIED. THEREFORE IMAGE WAS MANIPULATED TO APPROXIMATELY MATCH KNOWN PHYSICAL FEATURES, AND IS NOT TO SCALE.
  4. QUARRY /PROCESSING SETBACK PURSUANT TO 1987 EAST ROCKHILL TOWNSHIP ZONING ORDINANCE SECTION 27-304.H12.b(2)(b).

EXTRACTION DISTRICT  
CURRENT

LIMIT OF MINING AREA  
(PER DEP MINING PERMIT)

200' QUARRY/PROCESSING SETBACK



**ZONING DISTRICTS:**

- E - EXTRACTION
- VR - VILLAGE RESIDENTIAL
- RP - RESOURCE PROTECTION

**LEGEND**

- ZONING DISTRICT LINE
- LIMIT OF MINING AREA
- QUARRY/PROCESSING SETBACK
- SMP BOUNDARY (2018)

NO.	DATE	REV	REVISIONS
<b>2018 SITE AERIAL</b>			

**ROCKHILL QUARRY**  
EAST ROCKHILL TOWNSHIP, BUCKS COUNTY, PENNSYLVANIA

**C. ROBERT WYNN ASSOCIATES, INC.**  
*MUNICIPAL & CIVIL ENGINEERING*  
211 W. Broad Street, Quakertown, PA 18951 Phone 215-536-7336 Fax 215-536-5361

© MUNICIPAL/EAST ROCKHILL11 - FILE NUMBER(S) 1-225 PIERSON MATERIALS (HANSON QUARRY) CAD11-225 - HANSON HOLDINGS EXHB.DWG