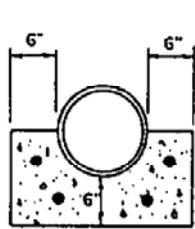


18 Attachment 6

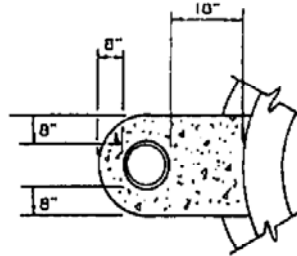
Township of East Rockhill

Note: Drop shall not exceed 10 feet. Drop shall be provided when difference between incoming and outgoing inverts is greater than 12 inches.

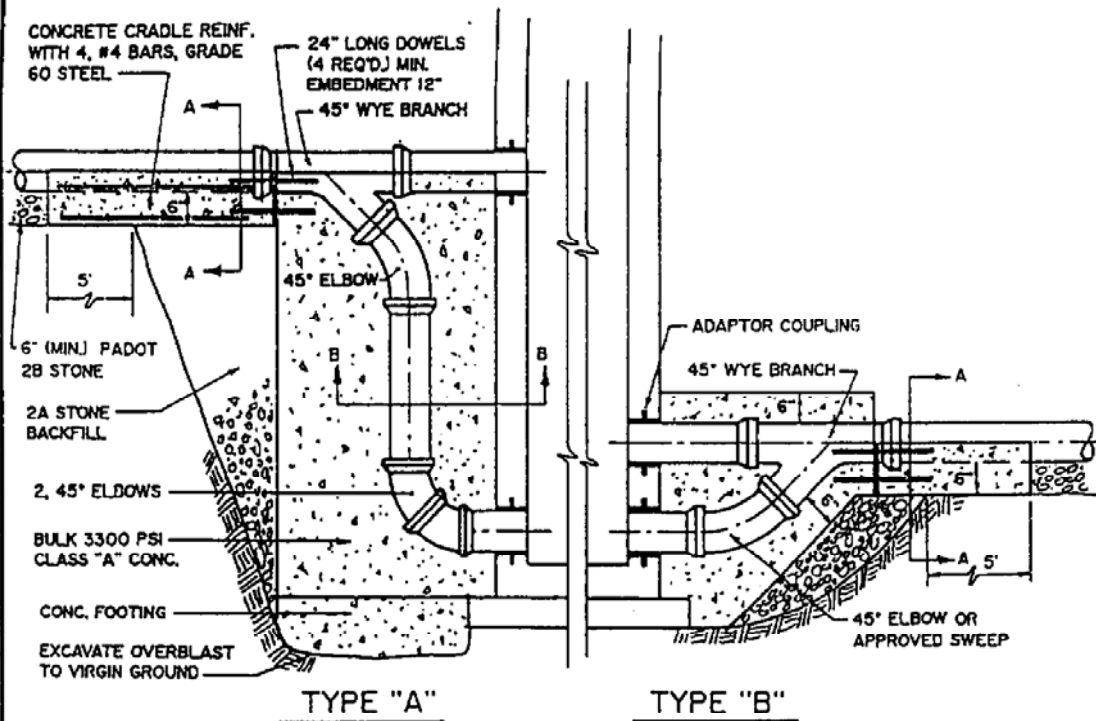


4, #4 REBAR

SECTION "A"



SECTION "B"



TYPE "A"

TYPE "B"

EAST ROCKHILL TOWNSHIP SEWER STANDARDS

<p>Not to Scale SCALE:</p>	<p>STANDARD TYPE A AND TYPE B FIELD CAST DROP MANHOLES (TIE-IN TO EXISTING MANHOLES ONLY)</p>	<p>S-5</p>
<p>1/92 DATE:</p>		<p>DWG. No.</p>