

# EAST ROCKHILL TOWNSHIP

## Report

FALL 2020

Information contained in this newsletter was accurate as of the production date. However, due to the COVID-19 pandemic, some information may have changed. Please check our website for up-to-date information.

### MUNICIPAL PROJECT NEARING COMPLETION

Our Township Municipal Building addition/renovation project is moving along on schedule. We are looking forward to the additional space to accommodate the public's needs. If you visit the area please be careful! We expect the work to be completed by January 2021.



#### INSIDE THIS ISSUE:

Be Prepared for Severe Weather.....	3	Rock Hill Quarry Update.....	9
How You Can Help Control The Spotted Lanternfly Population .....	3-4	Stormwater Tips For The Fall and Winter.....	9
It's Easy Being Green .....	4	Election 2020.....	10
Bucks County Covered Bridge Driving Tour.....	5	From the Desk of Kathleen Percetti, Tax Collector .....	11
Supervisors Notebook.....	6-7	From the Pennridge Regional Police Department.....	12
2020 Fall Leaf Collection.....	8	East Rockhill Township Contact Information .....	14

East Rockhill Township • 1622 North Ridge Road • Perkasie, PA 18944

This Edition of The East Rockhill Township Report is published by the Board of Supervisors to keep you informed on timely information about the township and your local government.

Visit us on the web at: [www.EastRockhillTownship.org](http://www.EastRockhillTownship.org)

# LAPP'S LANDSCAPE PRODUCTS LLC

**Wholesale - Retail**

ALL NATURAL HARDWOOD MULCH  
BLACK OR BROWN HARDWOOD MULCH  
WOOD CHIPS • RED MULCH • COMPOST  
MUSHROOM SOIL • TOPSOIL

**215-257-9040**

1828 Old Bethlehem Pike • Sellersville

**PICK-UP  
OR  
DELIVERY**

## C. ROBERT WYNN ASSOCIATES, INC.

*MUNICIPAL ENGINEERING SERVICES*

**C. Robert Wynn, P.E.**

*President*

211 West Broad Street  
Quakertown, PA 18951

OFFICE: (215) 536-7336  
FAX: (215) 536-5361  
EMAIL: crwynn@rmsn.com

*SERVING MUNICIPALITIES SINCE 1986*

## THE ROCKHILL FILLING STATION

**FAMILY RESTAURANT**

*Cozy environment,  
friendly people  
& great prices.*

**BYOB**  
Wed-Sat: 7am-8pm  
Sun: 7am-12noon



1710 N. Ridge Road  
Perkasie, PA 18944

**215-257-9552**

Check out our seasonal specials with fresh ingredients  
on Facebook @therockhillfillingstation and online at  
[www.therockhillfillingstation.com](http://www.therockhillfillingstation.com)



## LBIS LLC

**LUCILLE BONDI INSURANCE SOLUTIONS**

FREE CONSULTATIONS  
**215-256-5954**  
Medicare Supplement Specialists

Medicare Supplement Specialists  
18 Years Experience in the Senior Medicare Market  
Supplements - RX Plans - Advantage Plans

439 Main Street, Rear Building | Harleysville, PA 19438

[lucille@bondimedicaresolutions.com](mailto:lucille@bondimedicaresolutions.com) | [www.bondimedicaresolutions.com](http://www.bondimedicaresolutions.com)

# C & C



## Cafe

609 West Market Street  
Perkasie, PA 18944

**215.257.3400**

**215.257.3115 Fax**  
[candccafe@verizon.net](mailto:candccafe@verizon.net)

*Catering Available*

**Hours:**

Tuesday-Sunday:  
8:00 am to 2:00 pm  
*now through Covid-19*

*Parking In Rear*

**10%  
OFF**

**with this ad**



Care & Share  
**THRIFT SHOPPES**

ONE PURCHASE CAN MAKE A  
**BIG DIFFERENCE**

*Spend the  
day with us*

Shop: Mon.-Thur. 9-5; Fri. 9-8; Sat. 9-5  
Souderton Center • 783 Rt. 113, Souderton PA

[careandshareshoppes.org](http://careandshareshoppes.org) • 215-723-0315



GRIM  
BIEHN &  
THATCHER

Trusted Legal Counsel Since 1895



PERKASIE, PA

215.257.6811

[WWW.GRIMLAW.COM](http://WWW.GRIMLAW.COM)



A Member of  
International Order of the  
**GOLDEN RULE**  
The Rule You Know  
The People You Trust

**Celebrating 100 years of Service  
to the Pennridge Community**

**Bernard Suess  
Funeral Home, Inc.**

606 Arch Street, Perkasie, PA  
215-257-2144

Jeffrey F. Gahman, Supervisor  
Mark L. Dunigan, Funeral Director  
Funeral Pre-Planning & Pre-Financing  
Cremation Services & Casket Selection Room

**Considerate, Respectful and Honest  
Service When You Need It The Most**

## Be Prepared For Severe Weather

As everyone surely remembers, our area was hit with torrential rain in early August, causing severe flooding. Despite the best efforts of everyone involved, the local infrastructure is simply not capable of keeping up with multiple inches of rainfall over a short period of time. The best thing you, as a property owner, can do is be prepared for the possibility of flooding. By taking the following steps, you can help keep your household and property out of danger.



### Before the Event

- *Inspect your home.* Remove leaves and debris from gutters, clear your storm drains and drainage areas of any debris or trash, make sure windows and doors are properly secured, and make sure your sump pump is working if you have one.
- *During the winter, remove ice and snow from areas near drains and downspouts.* If there is snow around your home's foundation, clear it before it melts. Moving snow just three to five feet away from the house may reduce the risk of water damage.

### During the Event

- *If there is water in your home and a sump pump is ineffective, ensure that water stays away from outlets and other electrical sources.* Carefully turn off your main electrical switch while standing on a dry, non-conductive surface such as heavy rubber, plastic, or dry wood.
- *Also be on alert for gas leaks.* If the water rises high enough to extinguish the pilot light on your water heater or furnace, it may be letting gas into the property. Turn off the gas supply to these units, if possible. Do not use candles, lanterns, or open flames in the area, and do not smoke until you are absolutely certain that leaking is not an issue.
- *If water starts to rise in your house before you have escaped, retreat to a higher floor.* Do not try to swim to safety. Instead, wait for rescuers to come to you.

### After the Event

- *Wait for the water to drain out of the property, then check for structural damage before re-entering the property.* Do not use matches, lighters, or any other open flame, since explosive gas may still be trapped inside. Keep the power off until an electrician has inspected your system.
- *If the damage is severe, consider a professional cleaning service.* If you choose to clean the property yourself, make sure to wear appropriate protection such as rubber boots and gloves. Disinfect any affected areas with a solution of water and bleach (four tablespoons of bleach per gallon of water).

## How You Can Help Control The Spotted Lanternfly Population



As we head into the fall and winter seasons, the battle to contain the Spotted Lanternfly moves into a new phase. Tree traps are among the most effective tactics during this time.

Currently, the most effective trap for SLF is a funnel style trap, called a "circle trap," wrapped around the trunks of trees. SLF nymphs and adults are guided into a container at the top of the funnel as they crawl up from the ground onto the trunks and move upward to feed on the tree.

Another method is to use sticky bands, which capture SLF in sticky material as they move up the tree. However, this sticky material is not selective and can capture other animals including pollinators, butterflies, birds, squirrels, and more. As such, we suggest against the use of sticky bands unless an appropriate wildlife barrier is installed around them.

Only use tree traps where you see SLF feeding on trees or observe SLF crawling up the trees. Trapping is not effective on bushes or most vines because they don't have a large enough diameter for the trap. Place the trap about four feet from the ground and tightly secured against the tree. Keep in mind that the traps will work best on trees with smooth bark. Bark with deep grooves may allow the SLF to crawl underneath the trap.

Secure traps by wrapping the material tightly, stapling it into the tree, or using pushpins. To preserve the health of the tree that you are trying to protect, avoid using nails or wounding the green, living tissue underneath the bark. Only set up traps on trees on your property or where you have permission to do so.

*continued on page 4*

## How You Can Help Control the Spotted Lanternfly Population *(continued from page 3)*

If you use a sticky band, you should always accompany it with a wildlife barrier to prevent this bycatch. To do this, you can build a guard over the band using vinyl mesh netting (e.g. window screening) to prevent animals from contacting the sticky surface. While chicken wire has also been suggested, small birds and pollinators are still able to get trapped when using a guard with larger holes. The screening can be secured to the tree using push pins and it should extend several inches above and below the sticky band and should be close to the

tree at all points to preclude creatures from flying or climbing underneath. There is also a commercially available band that uses a white fiber material to hold the inward-facing sticky side of the band away from the trunk of the tree. This creates a protected sticky surface, which reduces the potential of catching birds and other animals.

If you decide to use sticky bands, check them regularly (once per week). If you capture an animal, do not attempt to free it by yourself. You may put the animal and yourself in danger. If you wish to try to save the animal, cover any exposed sticky material with plastic wrap or paper to reduce additional entanglement, remove the band from the tree as carefully as possible, and take the animal to a wildlife rehabilitation center. Find a center at the Pennsylvania Association of Wildlife Rehabilitators website.

*Source: Penn State Extension in collaboration with the Pennsylvania Department of Agriculture and the United States Department of Agriculture.*

Host	Nymphs			Adults		
	May	June	July	August	September	October
Rose (cultivated, multiflora, etc.)						
Grape (wild and cultivated)						
Tree-of-heaven						
Black walnut, butternut						
River birch						
Willow						
Sumac						
Silver/red maple						

## It's Easy Being Green

### Commercial Car Washes are a Greener Option Than Washing in Your Driveway



Few people realize that washing our cars in our driveways is one of the most environmentally unfriendly chores we can do around the house. Unlike household wastewater that enters sewers or septic systems and undergoes treatment before it is discharged into the environment, what runs off from your car sweeps down your driveway (an impervious surface) and goes right into storm drains—and eventually into rivers, streams, creeks and wetlands where it poisons aquatic life and wreaks other ecosystem havoc. After all, that water is loaded with a witch's brew of gasoline, oil, and residues from exhaust fumes—as well as the harsh detergents being used for the washing itself.

**Commercial Car Washes Treat Wastewater:** On the other hand, federal laws in both the U.S. and Canada require commercial carwash facilities to drain their wastewater into sewer systems, so it gets treated before it is discharged back into the great outdoors. And commercial car washes use computer controlled systems and high-pressure nozzles and pumps that minimize water usage. Many also recycle and re-use the rinse water. The International Carwash Association, an industry group representing commercial car wash companies, reports that automatic car washes use less than half the water of even the most careful home car washer. According to one report, washing a car at home typically uses between 80 and 140 gallons of water, while a commercial car wash averages less than 45 gallons per car.

**Think Green When Washing Your Car:** If you must wash your car at home, choose a biodegradable soap specifically formulated for automotive parts, such as Simple Green's Car Wash or Gliptone's Wash 'n Glow. Or you can make your own biodegradable car wash by mixing one cup of liquid dishwashing detergent and 3/4 cup of powdered laundry detergent (each should be chlorine- and phosphate-free and non-petroleum-based) with three gallons of water. This concentrate can then be used sparingly with water over exterior car surfaces. Even when using green-friendly cleaners, it is better to avoid the driveway and instead wash your car on your lawn or over dirt so that the toxic wastewater can be absorbed and neutralized in soil instead of flowing directly into storm drains or open water bodies. Also, try to sop up or disperse those sudsy puddles that remain after you're done. They contain toxic residues and can tempt thirsty animals.

**Waterless Car Wash Products are Good for Small Jobs:** One way to avoid such problems altogether is to wash your car using any number of waterless formulas available, which are especially handy for spot cleaning and are applied via spray bottle and then wiped off with a cloth. Freedom Waterless Car Wash is a leading product in this growing field.

## Township Website Offers Options to Stay Informed

It has never been easier for you to stay up-to-date on all the important things going on around the township. Here are the primary ways we communicate:

- **Real-time Notifications:** visit our website and sign up to receive real-time email announcements, including meeting agendas. Details on the How do I . . . Keep Informed.
  - **Social Media:** Our Twitter account is @EastRockhillTwp
  - **E-newsletter:** visit our website [www.EastRockhillTownship.org](http://www.EastRockhillTownship.org) and sign up to receive E-news, our monthly e-newsletter.
  - **Print Newsletter:** this publication as sent via mail twice a year.

Our robust website is designed to make it even more convenient for you to find the important information you are interested in. In addition to real-time notification of news article postings, you have the ability to bookmark pages for alerts to page postings, to add events directly to your calendar, and to perform keyword searches.

To take advantage of these enhancements, just log into your account (or create a new one if you haven't already).

## Support Our Local Fire Company

Because of the COVID-19 pandemic, our local volunteer fire companies have not been able to hold their annual fundraisers this year, including their summer carnivals. Since these fundraisers are critical to the departments' ability to keep us safe, your support is more important than ever.

*Please keep these dedicated men and women in mind when you decide which nonprofit organizations you choose to support.*

## Bucks County Covered Bridge Driving Tour

Looking for a reason to get out of the house and enjoy a good, safe time? Why not try a Covered Bridge Driving Tour. This tour of Bucks County's 12 Covered Bridges and unique Boxed Pony Bridge starts at the Memorial Building in Washington Crossing State Park on the Delaware River, south of New Hope.

The tour makes a large circle through Bucks County and is planned so the traveler can start at any one of the bridges. It is possible to make the trip in one day but since it is 90 miles long over some rural unmarked back roads, it is suggested that the tour be split into segments. We suggest observing the odometer to the exact tenths.

Currently, Pennridge communities are fundraising to complete renovations to save the South Perkasio Covered Bridge. In order to keep this beloved landmark accessible to the public, it requires long-needed structural repairs that need to be done soon. Once finished the bridge will be turned into a museum that will host tours, informational panels and special events regarding all of Bucks County's Covered Bridge history.



## *Supervisors Notebook*

*A roundup of news and notes from around the township*

### *Please Keep Personal Property Out of Open Space*

If your property abuts open space, please observe the property boundaries and respect public open space that is intended to benefit the entire neighborhood, not individual homeowners. No private property, including playground equipment, gardens and landscaping, is permitted.

### *Conservation Easement*

Utilizing open space earned income tax, a conservation easement will be placed on 12 acres off of Mountain View Drive.

### *Paving Project Completed*

Over the summer, Sterner Mill Road (from Mountain View to Clymer Road) was paved using Liquid Fuels funds from our share of the state tax motorists pay on each gallon of gas purchased.

### *Budget Process Begins*

The Township Administration has started the process of drafting a 2021 budget for review by the Board of Supervisors. As always, our priority will be to provide high-quality services to residents within a reasonable budget. Budget meetings are advertised on our website. During COVID-19, public attendance is limited so you must pre-register to attend. Your comments are welcomed and encouraged so your voice is heard.

### *Is Your Address Visible in an Emergency?*

Imagine a member of your family is having symptoms of a heart attack and you call 911. You rightfully expect first-responders to get to you as soon as humanly possible. But if your address number doesn't stand out well on your mailbox or door, a first-responder might drive right by. You wouldn't want them to pass by your home in the middle of an emergency when seconds are precious to a positive outcome.

The Board of Supervisors, on behalf of our police, fire and emergency medical personnel, encourage all property owners to take a few minutes to ensure addresses are clearly visible from the road, especially at night and in bad weather. The key, according to experts, is to make sure house numbers are large enough, are on a contrasting background and do not blend in too well with their surroundings. First-responders must be able to quickly and easily make out the number from a distance, they say.



### *Driveway Maintenance is Your Responsibility*

Property owners are responsible for keeping their driveway pipes clear of debris so stormwater can flow in the right-of-way. Maintaining the driveway so that stone does not go onto the public road, causing traffic safety issues, is also required.

By the way, our Public Works Department installs up to four driveway pipes each year. The driveway must be located on a Township-owned road; cost is materials, plus an installation fee according to the current fee schedule. If you are interested in using this service, please send us an email requesting the installation. An agreement will be mailed to you with notification of the material cost, and an invoice sent after the work is completed. If you choose to hire a contractor to install a driveway pipe, a Road Occupancy permit is required.

### *Ordinances Approved:*

The Board of Supervisors recently approved several new ordinances aimed at promoting safety and improving the quality of life for residents: 1) Residential chickens use regulations, 2) Residential livestock use regulations, 3) Sign regulation update and 4) Fireworks use update. ***You can check our website for more details on these and other ordinances.***

## Supervisors Notebook

*A roundup of news and notes from around the township*

**THANK YOU!**  
*thank you!*

*On behalf of all township residents, the Board of Supervisors and the staff of East Rockhill Township say “thank you” to the advertisers in this publication. With their support, we are able to write, design and print this newsletter printing at no cost to residents.*



### **Attention Rental Property Owners**

Tenant identification forms are required to be submitted to the Township annually. Please call the Township office if you have any questions.

### **No Hunting on Township Property**

We remind everyone that no hunting is permitted on Township open space. The law states “no person shall hunt for, capture, kill or attempt to capture or kill, or aid or assist in the capturing or killing, in any manner, any wild bird or wild animal of any description.” A conviction for violating this Ordinance could result in a fine of \$1,000, plus costs for each violation.

If you see a dead animal in the road on a Township Road contact South East Region PA fish and Game Commission at 610-926-3136 and if on a State Road PennDOT at 215-345-6060.

### **Snow Emergency Route**

With winter coming, now is a good time to remind you that the Township’s Snow Emergency Route is Buck Drive, Bryant Drive, Campus Drive, Deer Run Road, Fifth Street (Perkasie Borough line to Schwenkmill Road), Greenleaf Circle, Pine Court and Sunnyside Lane. During a snow emergency, cars cannot be parked on the street along the Snow Emergency Route to allow for efficient snow removal.

Snow emergency situations are announced on Twitter and via real-time email notification when posted to our homepage.



### **Attention Golfers!**

The Driving Range at Markey Park will remain open until mid-November, weather permitting. Until then, the range is open daily from dawn until dusk. Tokens are available at the range from a dispenser for \$5 each. Tokens can also be purchased Monday through Friday between 8 a.m. and 4 p.m. at the Township Office. You can buy them there for \$5 each or seven (7) for \$33. Senior citizens can purchase tokens for \$4.50 apiece. One token gives a bucket of 55 balls.

## 2020 Fall Leaf Collection

To ensure there is time to collect all residents' leaves, one-time leaf collection by our Public Works Department will start October 26. Once the truck collects on your road do not place leaves for a 2nd collection which will impede stormwater flow. Although we will try to meet the schedule, collection is affected by poor weather. Updates to the schedule are posted on our homepage.

### SECTION I: October 26

Axe Handle Road  
Clymer Road  
Covered Bridge Road  
Richlandtown Road  
Sternner Mill Road

### SECTION II: November 2

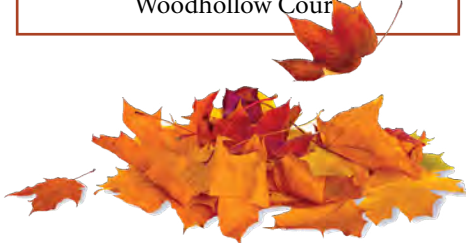
Butler Lane  
Crest Drive  
Dell Drive  
East Rock Road  
Harriet Drive  
Meadow Lane  
Old Bethlehem Road  
Ridge Road  
School House Road  
Schwenkmill Rd, West (*above Ridge Rd*)  
Three Mile Run Road  
Tower Court  
Tunnel Road  
Valley View Lane  
West Rock Road  
Willow Drive

### SECTION III: November 12

Azalea Court  
Blue Rock Drive  
Boulder Drive  
East Rockhill Road  
Hill Road  
Holly Drive  
Muskrat Road  
North Rockhill Road  
Old Bethlehem Pike  
Park Avenue  
Pebble Court  
Richhill Road  
Ridge Run Road  
Rocky Mount Drive  
Route 313  
Shale Circle  
Stone Edge Road  
Woodbridge Court  
Woodhollow Cour

### SECTION IV: November 23

Arrowwood Drive  
Blooming Glen Road  
Branch Road  
Bridgeview Drive  
Bryant Drive  
Buck Drive  
Campus Drive  
Cedar View Drive  
Creekview Road  
Deer Run Road  
Dublin Way  
Evergreen Lane  
Fifth Street  
Firethorn Drive  
Greenleaf Circle  
Hillendale Road  
Lark Lane  
Owl Lane  
Pine Court  
Schwenkmill Road, East  
Schwenkmill Rd, West (*below Ridge Rd*)  
Seven Corner Road  
Sunnyside Lane  
White Road  
Winterberry Drive



Please follow these guidelines to ensure a successful collection:

**One-Time Collection:** Have your leaves in neat piles along road frontage by 7am on the first day of collection for your section. Once leaves have been picked up on your street, do not place leaves out for a second collection. To make sure we have time to collect all residents leaves we cannot return to a street once the leaves have been collected.

**Prevent Equipment Damage:** Do not include rocks, sticks, trash, grass, or other material with your leaves. This does damage to the collection machine, causing downtime and expenses for repairs.

**Private Property:** Township employees and/or equipment are not permitted to enter private property to remove leaves; only leaves on road frontage can be removed.

**Other Options for Disposal:** Because a second collection is not possible, do not place leaves along street frontage after leaves were collected on your road which will impede stormwater flow. Contact your private trash hauler for collection, mulch with a lawn mower, or dispose of in the yard waste containers behind the Township office Monday through Saturday from 6am to 9pm and on Sunday from 6am to 1pm. No bags or Contractors are allowed.

**No Open  
Burning  
Allowed in  
the Township**



The Township's Code Enforcement Department and Pennridge Regional Police would like to remind residents that the burning of trash and recyclable materials -- including leaves and tree waste -- is prohibited by Township Ordinance in compliance with the Pennsylvania Department of Environmental Protection regulations.



## Rock Hill Quarry Update

The Rock Hill Quarry is located at 2055 North Rockhill Road in the extraction zoning district. It resumed quarry operations in early 2018 after at least 30 years of inactivity. The Pennsylvania Department of Environmental Protection's extraction cessation order for all mining and related activities at the Rock Hill Quarry remains in place.

On August 14, 2020 DEP received its requested electron microscopy (TEM) and petrographic analysis from Hanson for rock samples previously taken at the Rock Hill Quarry to determine the extent and distribution of naturally occurring asbestos (NOA) at the site. DEP's review of the submission began on August 17.



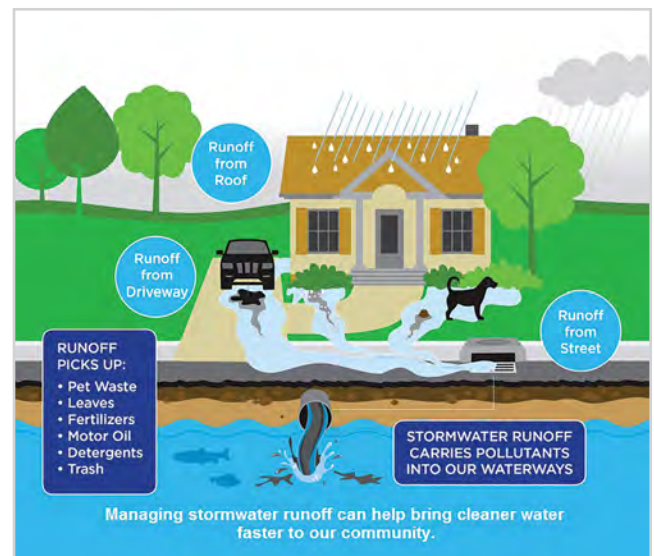
R.E. Pierson Materials' removal of equipment from the site was completed on August 6, 2020. The DEP Rock Hill Quarry page (<https://www.dep.pa.gov/About/Regional/SoutheastRegion/Community%20Information/Pages/Rock-Hill-Quarry-.aspx>) continues to be updated with all documents received.

If you are interested in being added to the DEP mailing list for updates, please send an email to [RA-EPmining@pa.gov](mailto:RA-EPmining@pa.gov) with the request.

## Stormwater Tips for the Fall and Winter

It is important to control stormwater pollution and stay vigilant in protecting our local waterways. Here's how you can help this fall:

- Let your grass clippings lay. Not only does this reduce waste, the clippings will act as a natural fertilizer for your lawn, releasing nutrients and water into the soil.
- Use fertilizers sparingly and never before rain. When applying fertilizers, avoid spreading them in paved areas where they can easily wash into a storm drain.
- Plant a native tree. Trees have deep roots that absorb rainwater and reduce erosion. Some natives, like the paw paw tree, produce an edible fruit for you to harvest and enjoy.
- Install a rain garden. Rain gardens are bowl shaped gardens, planted with native vegetation, that will filter and use stormwater. Plant them in a naturally wet area in your yard to reduce flooding.



When it snows:

- Shovel as soon as possible after a snowstorm. As a result, less ice will form and you won't need to use as much salt or deicer.
- Use safe and effective alternatives to salt. Remember that salt is not effective below 15 degrees Fahrenheit. Sand or kitty litter will give you traction when it's too cold for salt.
- Plant native species, that are salt tolerant, near paved areas. Not only will these species be able to survive despite the road salt, they will also act as a protective buffer for local waterways.
- Make sure the storm drains closest to your property are clear of snow and other debris. Do not shovel snow into storm drains since they empty directly into local creeks.

# ELECTION 2020

## Your vote is your voice



This year, the General Election is scheduled for

**TUESDAY, NOVEMBER 3<sup>rd</sup> from 7 A.M. until 8 P.M.**

East Rockhill Township is divided into two voting districts, but there is only one polling place:

**CHRIST COMMUNITY BIBLE CHURCH  
1830 NORTH RIDGE ROAD  
PERKASIE, PA 18944**

*Visit our website for a map of the voting districts.*

*New voters must show identification the first time they vote in a new district.*



Voters who are ill or will be away from their designated voting districts on Election Day can download an Absentee ballot from the Bucks County website or pick up a form at the Post Office, Township Building, Wine & Spirit Shoppe, or Library.

All Pennsylvanians are now eligible for mail-in ballots. You may request this ballot without reason. If you applied for a mail-in ballot with “permanent status” before the Primary Election, you will receive one for the General Election. If you did not, you will need to re-apply for a mail-in ballot.

*The last day to apply for a mail-in or absentee ballot is October 27 (subject to change).* Apply online at [www.VotesPA.com](http://www.VotesPA.com) or call the Board of Elections. Apply NOW for mail-in ballots.

- **Bucks County Voters Guide:** Visit [www.Vote411.org](http://www.Vote411.org) to access the League of Women Voters of Bucks County Voters Guide.
- **New Clear Ballot voting systems:** Bucks County Board of Elections has posted information on [www.buckscounty.org](http://www.buckscounty.org) to enable voters to familiarize themselves with the new Clear Ballot voting systems that will be in use at all polls on November 3.
- **Absentee Ballot:** November 3 is the last day for the Bucks County Board of Elections to receive voted mail-in and civilian absentee ballots. They must be received by 8 p.m.
- **Concerns on Election Day:** If you have concerns on Election Day, call the Election Protection Hotline at 866-OUR-VOTE (866-687-8683). Official answers from the PA Department of State on Election Day are available on Election Day at 1-877-868-3772 from the Pennsylvania Department of State; interpreters are available.
- **Voting Information:** Visit the League of Women Voters of Bucks County’s website and follow @LWVBucksCounty on Facebook and Twitter to keep up to date with voting information.  
*Source: League of Women Voters of Bucks County (PA)*

## FROM THE DESK OF Kathleen Percetti, Tax Collector

All 2020 real estate taxes have been mailed out to all property owners. Please contact me if you have not received your bills and I will be happy to email you or send you a copy in the mail.

- **Bucks County and East Rockhill Township tax bills** were mailed on March 1 and are now due in penalty until the end of this year.
- **Pennridge School District real estate taxes** were mailed on July 1 and are due in face until October 31. After October 31, school taxes will be due in penalty until the end of the year. Final notices will be mailed out by November 15.

If you elected to pay your school real estate taxes by installment, the remaining two installment coupons were mailed in mid-September. The second installment is due on October 31 and the final installment is due December 15. Please note that if you elect to opt in to pay by installments, you cannot opt out after the first payment is made.

If the property you own is your primary residence, you may be eligible to receive a reduction in your school tax bill as part of the **Pennsylvania Taxpayer Relief Act**. Under a homestead or farmstead property tax exclusion, the assessed value of each homestead or farmstead is reduced by the same amount before the property tax is computed. If you do not see this reduction on your school bill and you believe you are eligible, please contact me.

The **Pennsylvania Property Tax/Rent Rebate program** benefits eligible Pennsylvanians age 65 and older; widows and widowers age 50 and older; and people with disabilities age 18 and older. The Property Tax/Rent Rebate is based on the property taxes or rents you paid during the previous calendar year.

The property owner's eligible income, including the income that your spouse earned while residing with you, is \$35,000 or less. For renters, that threshold is \$15,000 or less. Applicants can exclude half of their Social Security income. The rebates range from \$250-\$650 for homeowners and \$500-\$600 for renters. More information can be found at [www.revenue.pa.gov](http://www.revenue.pa.gov) or you can contact me and I can send you the information.

The Pennridge School District Board of Directors approved a **property tax rebate program** in September of 2019 that will provide a discount of up to \$162.50 for certain homeowners. You can find the application and the instructions on the Pennridge School District website or you can call the district Business Office at 215-453-2713.

If you would like to verify that your tax payments were received or have any other concerns, please contact me at 215-453-8866 or by email at [astrockhilltax@comcast.net](mailto:astrockhilltax@comcast.net). I will be happy to assist you with any questions that you have.

**Smoke  
Alarms  
Save  
Lives!**



**Test your smoke  
alarms once a  
month.**

A smoke alarm can save your life in a fire. Use the test button to make sure your smoke alarms are working.

U.S. Fire  
Administration



FEMA



**Remember: Replace Your Smoke Alarms After 10 Years**

## From the Pennridge Regional Police Department

The weather is changing and pretty soon we will be raking leaves and shoveling snow (unless you are an East Rockhill snowbird and leave the shoveling to us who stay north!). Anyway, with the seasons changing, we need to be mindful that our driving should change, too. We need to be mindful of several changing conditions when we drive in the fall and winter.



- **DEER** - Fall means the deer are moving. As hunters go into the woods, the deer may be pushed out into the way of traffic. We investigate many crashes over the fall and winter involving deer. Remember if you see one there is likely more.
- **SUN GLARE** - Fall brings around shorter days. The sun starts to set earlier and this could mean extreme sun glare as you travel home from work. Make sure you have enough windshield washer fluid and a good pair of sunglasses.
- **WEATHER** - Where do I start . . . fall can bring fog and wet leaves on the road. Winter brings icy patches, slush, and snow. Leave yourself enough time that you are not rushing while driving.
- **SNOW** - And since I mentioned snow....it is illegal to put your driveway snow back into the roadway. This could get a visit from your neighborhood friendly police officer.



*Stay Safe and Drive Safe!*

Rod Blake, Chief  
Pennridge Regional Police Department

## Safe Winter Driving

**W**inter driving can be hazardous and scary, especially in northern regions that get a lot of snow and ice. Additional preparations can help make a trip safer, or help motorists deal with an emergency. This sheet provides safety information to your residents to help prevent motor vehicle injuries due to winter storms.

### PREPARE

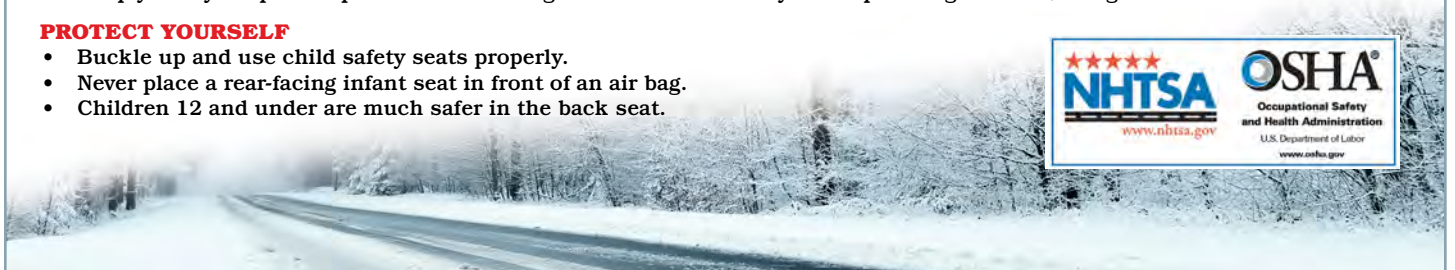
- **Maintain Your Car:** Check battery, tire tread, and windshield wipers, keep your windows clear, put no-freeze fluid in the washer reservoir, and check your antifreeze.
- **Have On Hand:** flashlight, jumper cables, abrasive material (sand, kitty litter, even floor mats), shovel, snow brush, ice scraper, warning devices (like flares) and blankets. For long trips, add food and water, medication and cell phone.
- **Stopped or Stalled?** Stay in your car, don't overexert, put bright markers on antenna or windows and shine dome light, and, if you run your car, clear exhaust pipe and run it just enough to stay warm.
- **Plan Your Route:** Allow plenty of time (check the weather and leave early if necessary), be familiar with the maps/ directions, and let others know your route and arrival time.

### PREVENT CRASHES

- Drugs and alcohol never mix with driving.
- Slow down and increase distances between cars.
- Keep your eyes open for pedestrians walking in the road.
- Avoid fatigue – Get plenty of rest before the trip, stop at least every three hours, and rotate drivers if possible.
- If you are planning to drink, designate a sober driver.

### PROTECT YOURSELF

- Buckle up and use child safety seats properly.
- Never place a rear-facing infant seat in front of an air bag.
- Children 12 and under are much safer in the back seat.



# Peace of mind starts with a mammogram.

The only risk in getting a mammogram ... is not getting one. Because even if we do find cancer, Grand View Health's dedicated staff of nurse navigators and cancer specialists are ready to guide you to the best possible outcome. And thanks to our membership with the Penn Cancer Network, you can have total confidence that your health is in the most capable hands.

## Take the first step.

Visit [GVH.org/Breast](http://GVH.org/Breast)  
or call 215-453-4100.



**GVH**  
**GRAND VIEW  
HEALTH**



Penn Medicine  
Cancer Network | Member

# EAST ROCKHILL TOWNSHIP

## *General Information and Directory*

[www.EastRockhillTownship.org](http://www.EastRockhillTownship.org)

[Staff@EastRockhillTownship.org](mailto:Staff@EastRockhillTownship.org)

### ADMINISTRATION

1622 N. Ridge Road, Perkasie, PA 18944

Monday to Friday 8:00 AM to 4:00 PM

215-257-9156

### PUBLIC WORKS

1622 N. Ridge Road, Perkasie, PA 18944

Monday to Friday 7:00 AM to 3:00 PM

215-257-4163

### PENNRIDGE REGIONAL POLICE DEPARTMENT

200 Ridge Road, Sellersville, PA 18960

Office: 215-257-5104

Emergency: 911

Non-Emergency: 215-257-2444

### ELECTED TAX COLLECTOR

Kathleen Percetti

Mailing: P.O. Box 68, Perkasie, PA 18944

Office: 2037 Hill Road, Sellersville, PA 18960

215-453-8866

### BOARD OF SUPERVISORS

David R. Nyman, *Chairperson*

Gary W. Volovnik, *Vice-Chairperson*

James C. Nietupski, *Member*

### TOWNSHIP STAFF

Marianne Morano, *Township Manager*

Jeff Scholl, *Public Works Director*

Bonnie Schorr, *Administrative Assistant*

Susan Burger, *Finance Clerk*

Paul Behr, *Mechanic*

Kirby Richards, *Laborer*

Latrell Belfield, *Laborer*

### MEETING DATES

Board of Supervisors	4th Tuesday, except in December meeting is advertised for 12/17, 7:00 PM
Planning Commission	1st and 2nd Thursday as needed 7:00 PM
Park & Recreation	2nd Tuesday of Feb, May, Aug, Nov as needed 7:00 PM
Police Commission	4th Wednesday except Nov and Dec meeting is advertised for 11/19 and 12/15, 7:00 PM
Zoning Hearing Board	Scheduled as Needed
UCC Joint Appeal Board	2nd Wednesday as needed 7:00 PM





Success Rehabilitation, Inc.



## We Put You First

...By improving the lives of individuals with a traumatic brain injury or other neurological impairment through residential and/or outpatient therapies.

5666 Clymer Road • Quakertown PA 18951  
215-538-3488 • SuccessRehab.com

happy tree



STEPHEN REDDING  
Founder

www.happytreeltd.com

FULLY INSURED • REASONABLE RATES

**215-257-7650**

126 Reller Road • Green Lane, PA 18054

Tree Service, Landscaping, Plant Health Care

**Quality work and integrity in our business dealings are the hallmarks of Happy Tree.**

- **Professional arborist services** for all large trees including pruning, shaping, deadwood removal, cabling, bracing, cavity work, storm damage repair, hazard evaluation, and tree removal.
- **Complete landscaping services from design through installation and maintenance.** Design services from our own in-house Registered Landscape Architect. We grow our own trees and shrubs to ensure top quality, hardy installations.
- **Cutting-edge plant health care treatments,** including nutritional support, feeding, pest control, and treatment of disease.

**“SATISFACTION THAT GROWS!”**

## CATTAIL LTD.



- LANDSCAPE
- HARDSCAPE
- GENERAL
- FULL SERVICE
- FREE ESTIMATES
- FULLY INSURED

Bill Blazer

Phone/Fax: 215-453-7200 • Cell: 215-669-8529

Email: cattailtd@hotmail.com

www.cattailtd.com

PA CONTRACTOR - PA #018928

## CLASSIC EXTERIORS inc



Bill Blazer

- New & Remodeled
- Personal Service
- Competitive Prices
- Fully Insured

Phone/Fax: 215-453-7200 • Cell: 215-669-8529

Email: classicexteriors@hotmail.com

www.classicexteriorsinc.com

PA CONTRACTOR - PA #016450



The Commerical Refrigeration and HVAC Experts

## DIVERSIFIED REFRIGERATION INCORPORATED



- Design and Installation •
- Planned Preventative Maintenance •
- Service and Repair •

of Commercial Refrigeration, Heating, Air Conditioning and Ventilation Systems

**24-HOUR EMERGENCY SERVICE**

105 High Street • Dublin, PA 18917 • Phone: 215-249-0445

TOLL FREE 1-800-938-COOL • www.divref.com

## Bucks County's Finest Luxury Townhome Rentals



**DOYLESTOWN • CHALFONT PERKASIE • SELLERSVILLE**

All townhomes have private entrances.

**HERITAGE**  
Property Management

**844.610.5567**

**HeritagePropertyRentals.com**



**PETS STAY FREE!**

# East Rockhill Township

1622 North Ridge Road  
Perkasie, PA 18944



PRESORTED  
STANDARD  
U.S. POSTAGE  
**PAID**  
HARRISBURG, PA  
PERMIT NO. 609



FALL 2020

## hometownpress

This Community Newsletter is produced for the East Rockhill Township  
by Hometown Press • 215.257.1500 • All rights reserved®



To Place An Ad Call Denise At Hometown Press • 610-346-6126 • DeniseOfHTP@yahoo.com  
Content provided by Joe Ferry • 267-772-0740



### 215-257-9313

Certified water treatment specialist  
30 years experience

Three Generations serving you



- Water Softeners
- Bacterial Control
- Reverse Osmosis
- Well Tanks
- pH Correction
- Iron Reduction
- Well Pumps
- Water Heaters

\$5 off service call with this ad - with payment at time of service

[www.communityatrockhill.org](http://www.communityatrockhill.org)

WHAT DOES **INSPIRED LIVING** LOOK LIKE?

IT CAN BE **ACTIVE** ENGAGED CAREFREE

**THE TOWNSHIP OF EAST ROCKHILL**  
ALWAYS SERVED BY NEARBY RESIDENTS

No matter what inspired living looks like to you, it thrives here in our community!

We have immediate availability on select One Bedroom Models.  
**For more information CALL TODAY! 267-429-3344**



## Your close-to-home resource



- your college degree
- courses & certifications for personal and professional development
- arts & cultural activities

Visit your campus at Hillendale Road or [bucks.edu](http://bucks.edu)

# Hunsberger Electric

Serving Perkasie & Surrounding Communities since 1932

• We can handle all of your electrical needs •

ELECTRICAL CONTRACTING & MAINTENANCE  
INDUSTRIAL – RESIDENTIAL – COMMERCIAL

Installation of Security Cameras,  
Data, Phone, Motion Lights & Generators

Licensed and Insured

215-257-4592

249 W. Market St. • Perkasie, PA 18944

[www.hunsbergerelectric.com](http://www.hunsbergerelectric.com)

